

# Making Biodiesel With the BioPro 190



**Step 1** Pour or pump in the oil to be processed. The fill line inside marks 50 gallons.



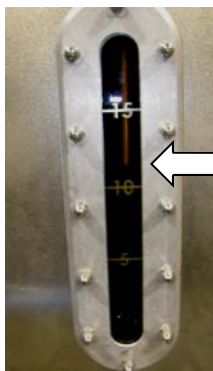
**Step 2**  
Pour in base catalyst (NaOH or KOH)



**Step 3**  
Pour in methanol. Correct levels shown in sight glasses.



**Step 4** Press the big green REACTION START button, and come back in 24 hours for Step 5.



**Step 5** Drain off glycerin through ball valve.



**Step 6** Press the big blue WASH START button, and come back in 24 hours for 50 gallons of ready to use biodiesel.