

WVO Designs  
Monster Gear Pump Reversible Switch Instructions  
843-972-4211  
[support@wvodesigns.com](mailto:support@wvodesigns.com)

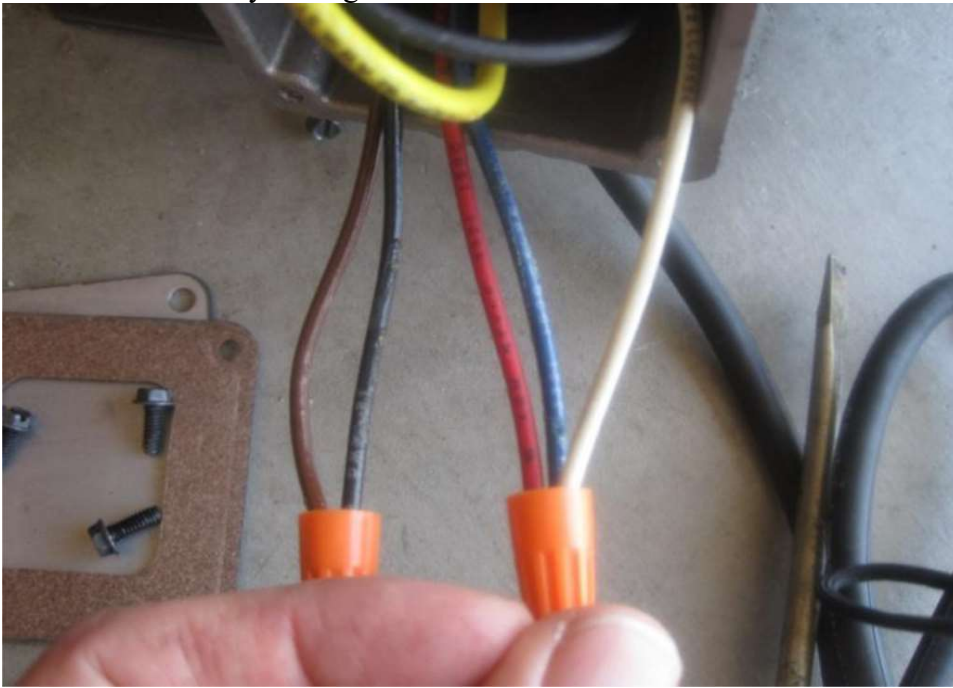


**Items Needed:**

- (1) On/Off/On DPDT (Double Pole Double Throw) Switch with quick connect terminals (McMaster Carr Part # 7343K791 w/ quick disconnect terminals)
- (6) 14-16 Gauge Quick Disconnect Female Spade Connector, Insulated
- ½” Metal Drill Bit
- Wire Strippers/Crimpers
- Needle Nose Pliers
- Silicone Sealant
- (2) Wire Nuts
- (4) Short pieces of 14 gauge wire

Note: If you don't feel comfortable wiring, consult an electrician

Switching the #8 and #5 wires will reverse the rotation of the motor.  
This will be done by adding an extra switch.



**Step 1:**

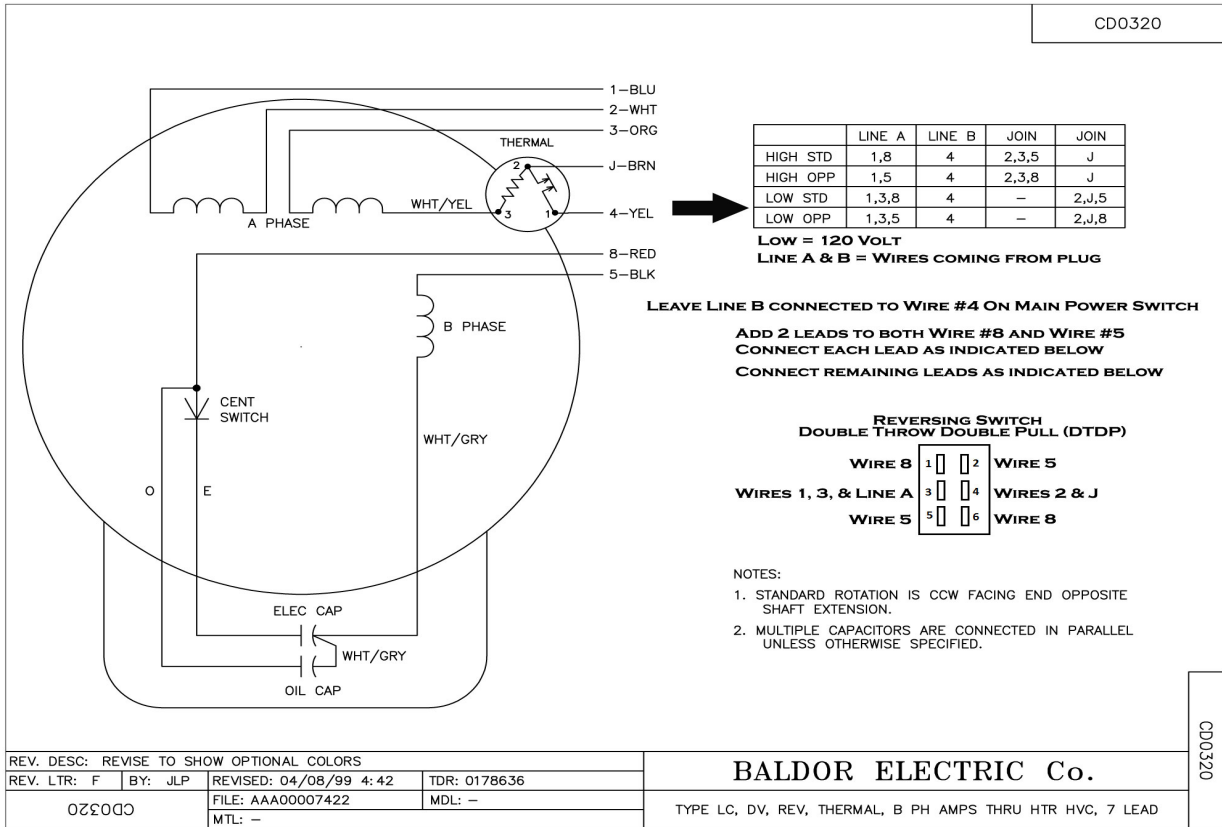
Remove the existing switch (be sure to mark on the actual switch which way is on and off as the plate will be removed as part of this process)

Drill 2 new ½” holes on either side of the existing hole. Make sure to measure in from the sides enough to leave just enough room for the switches.

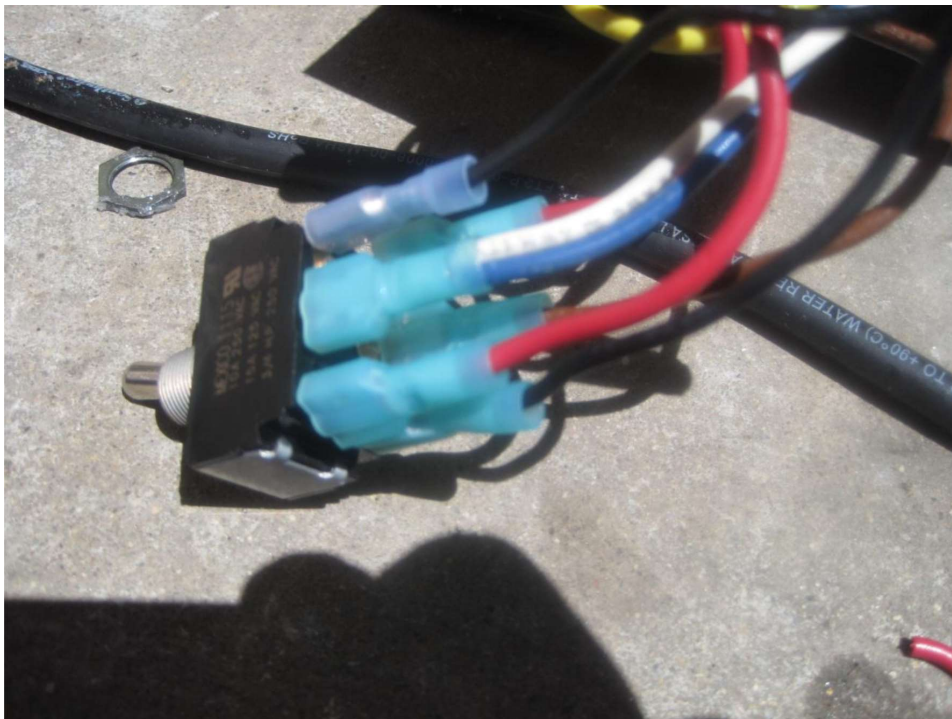


**Step 2:**

Add 2 leads to the #8 wire and another 2 leads to the #5 wire. Connect using wire nuts.  
 Add quick connect female spade connectors to all of the wire bundles  
 Wire the switch new switch as shown below.



Then connect the wires to the switch





### Step 3

Next, connect power to the pump and test the switches to ensure it's wired correctly

To switch directions you MUST turn the power switch off first.

Switching with power on may damage the motor

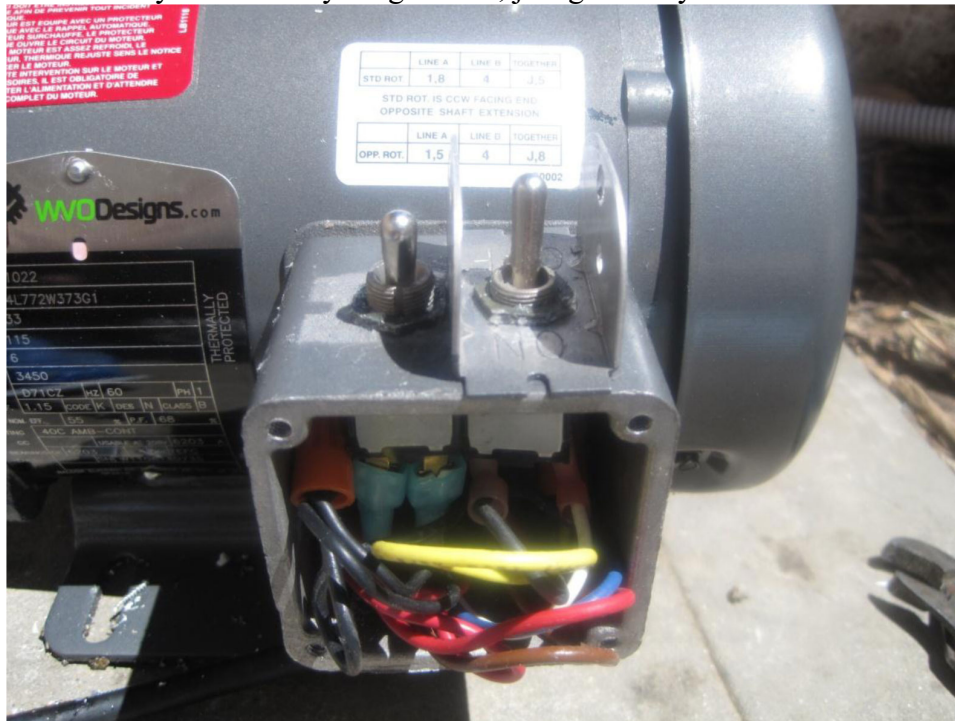
Next place the switches back into the housing, being careful not to knock any of them loose

Add silicone sealer around the unused switch hole to seal everything back up.



### Step 4

Add the power switch plate, attach the switch nuts. Be sure to get the plate on in the right direction. Carefully place all of the wires back into the wiring housing being careful not to knock any loose. Everything will fit, just go slowly. Then attach the housing cap.



## Step 5

Here's how it will look once complete:



### NOTE:

DO NOT reverse the pump direction while the power switch is on. Doing so may damage the pump motor.

Test the switches out to make sure everything works. Enjoy your new reversible pump!